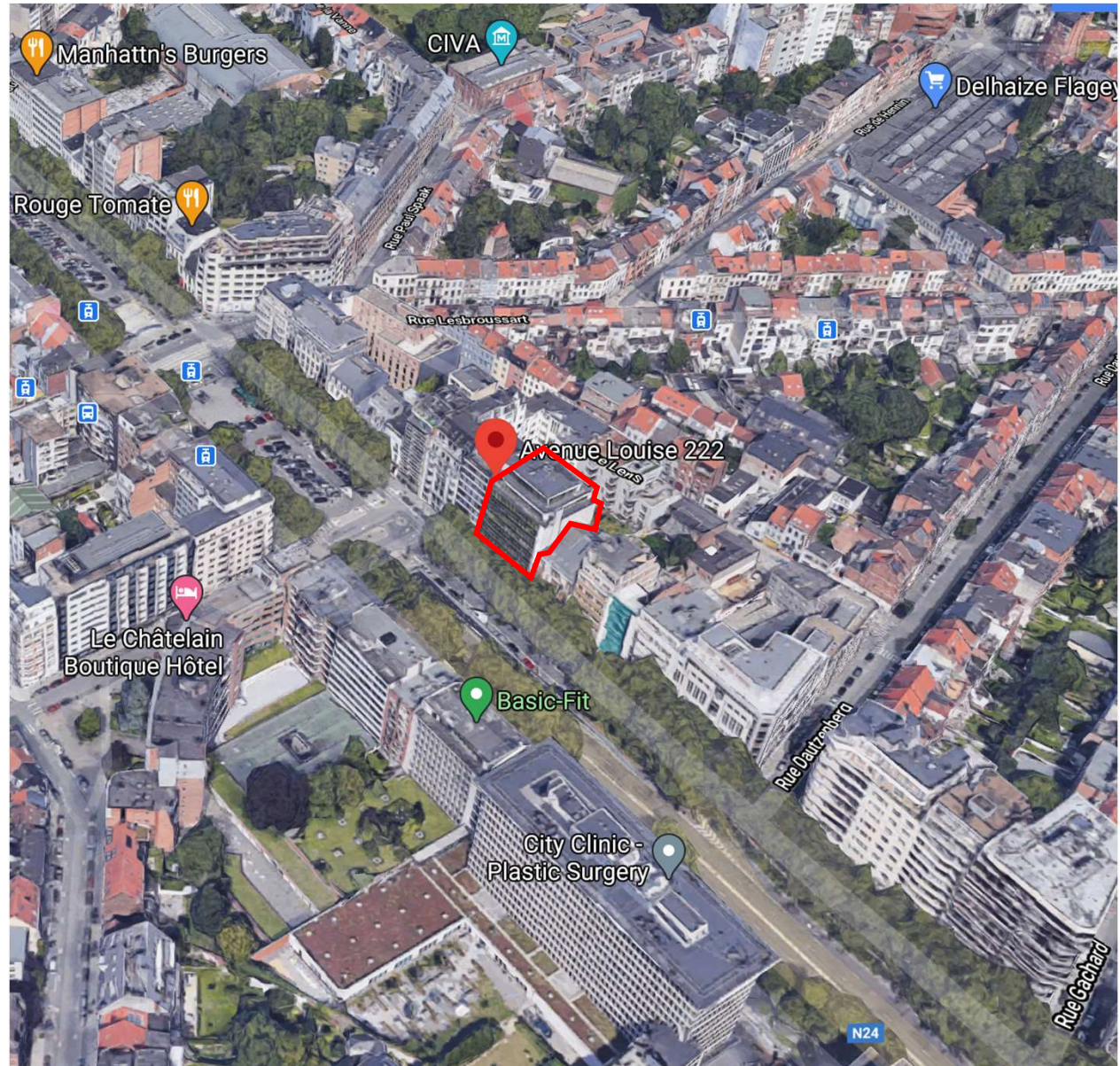
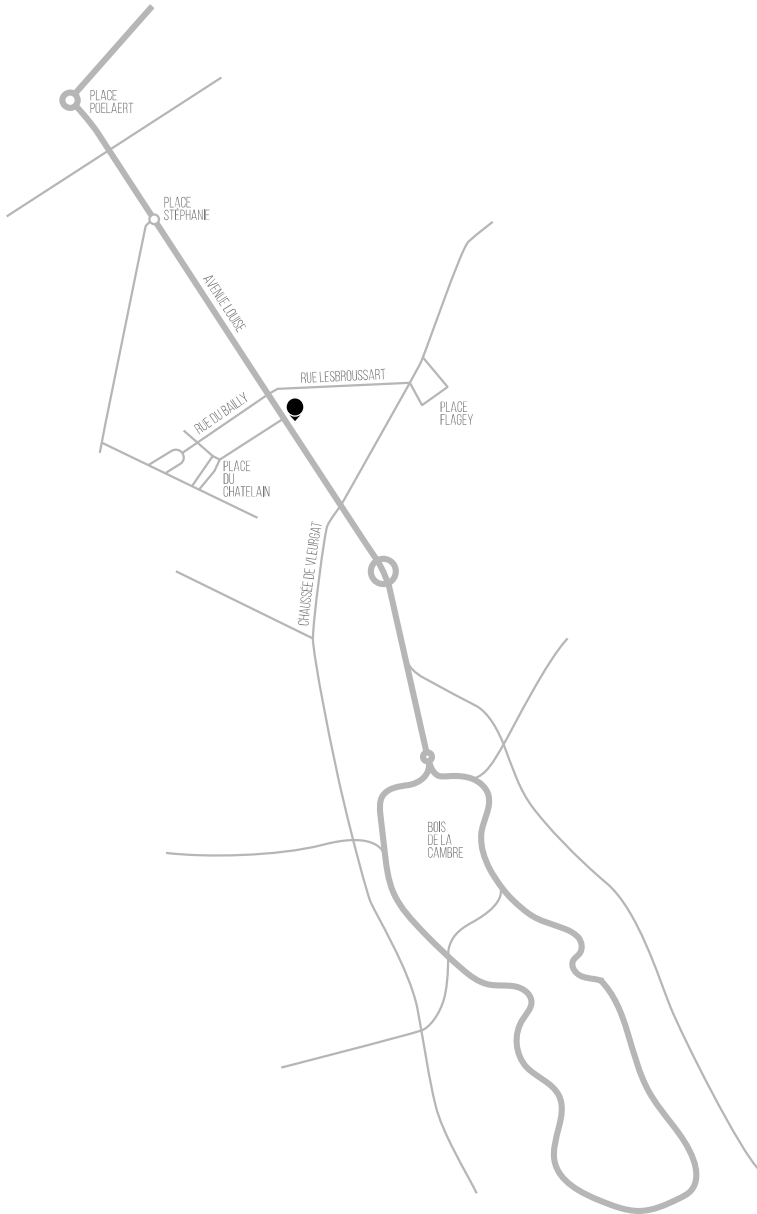
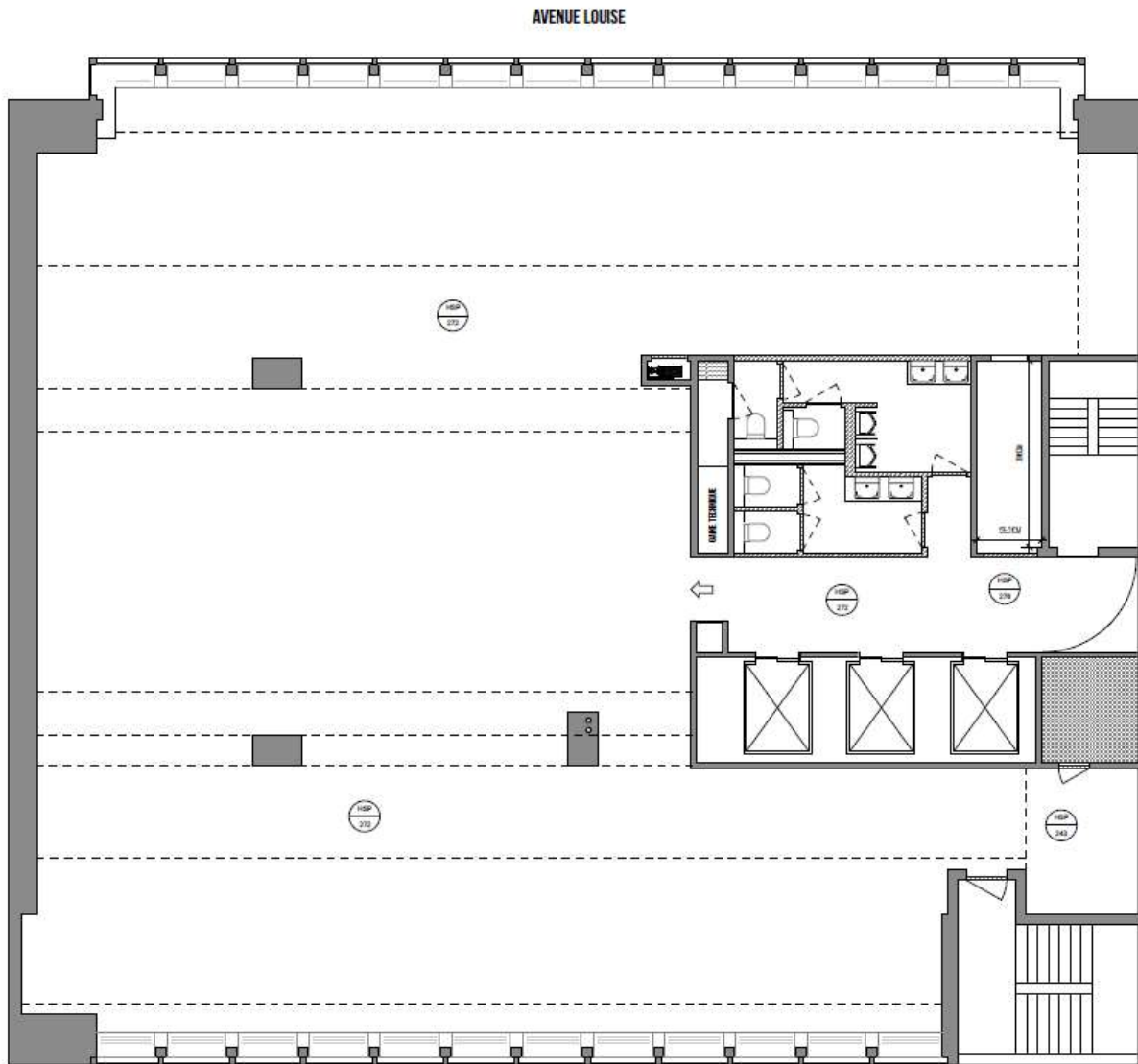


- High standard building in the Louise District
- Good accessibility, both by car & public transport
- Offices: as from 233 up to 491m<sup>2</sup> with parking spaces
- Sports club on the ground floor



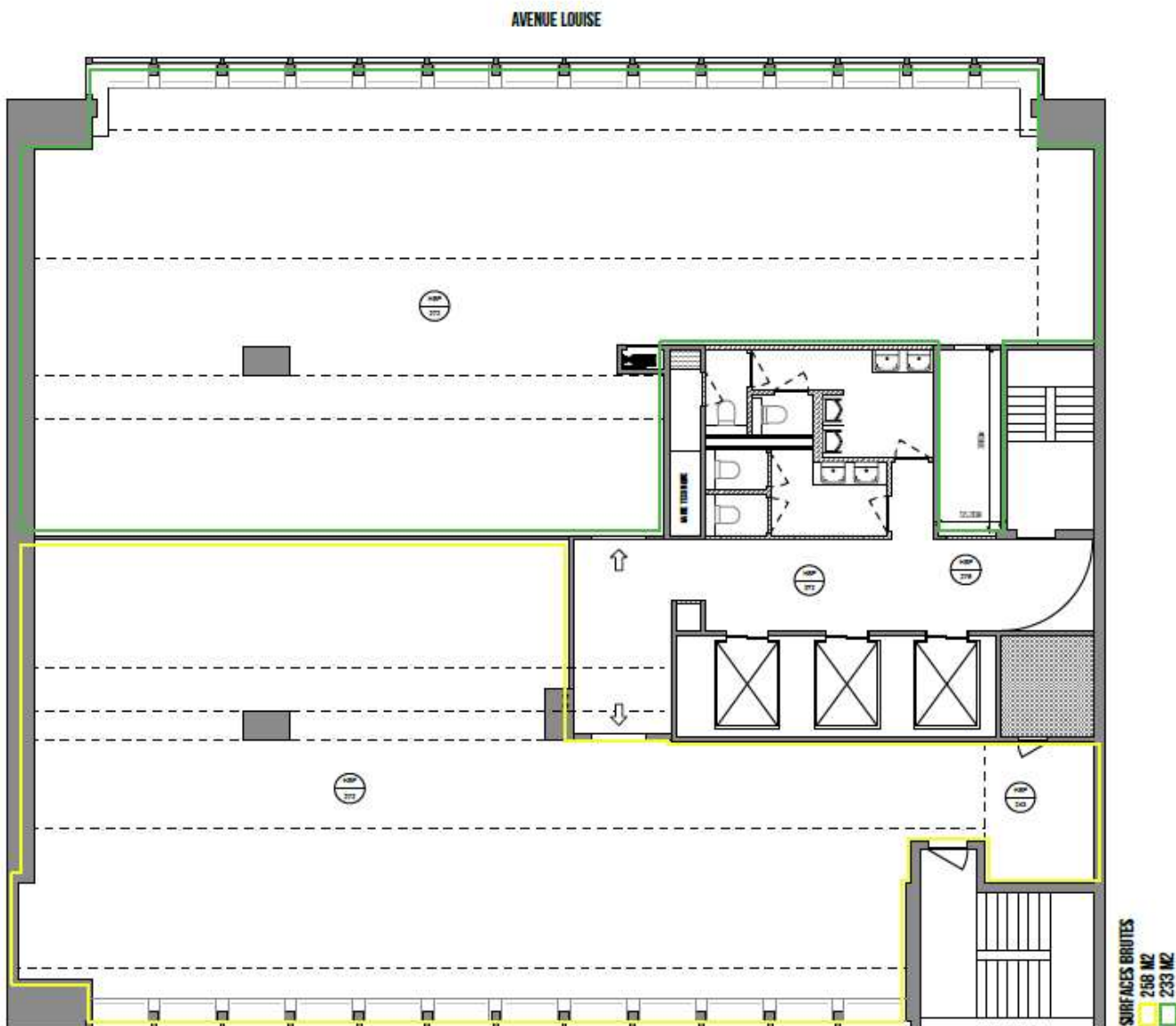






LEVEL 1	491 m <sup>2</sup>
Rent (140€/m <sup>2</sup> /year)	5.728,33 €
Estimation charges + taxes	3.854,35 €
<b>TOTAL / month</b>	<b>9.582,68 €</b>

*\*Parking spaces: 125€/lot/month*



LEVEL 1	233 m <sup>2</sup>
Rent (145€/m <sup>2</sup> /year)	2.815,42 €
Estimation charges + taxes	1.829,05 €
<b>TOTAL / month</b>	<b>4644,47 €</b>

LEVEL 1	258 m <sup>2</sup>
Rent (145€/m <sup>2</sup> /year)	3.117,50 €
Estimation charges + taxes	2.025,30 €
<b>TOTAL / month</b>	<b>5.142,80 €</b>

\*Parking spaces: 125€/lot/month



